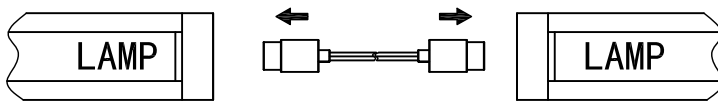
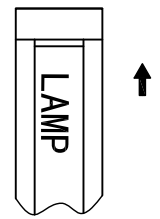
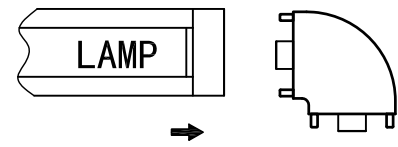
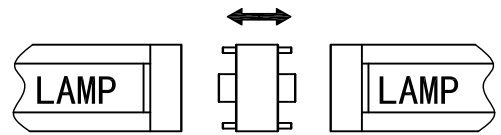
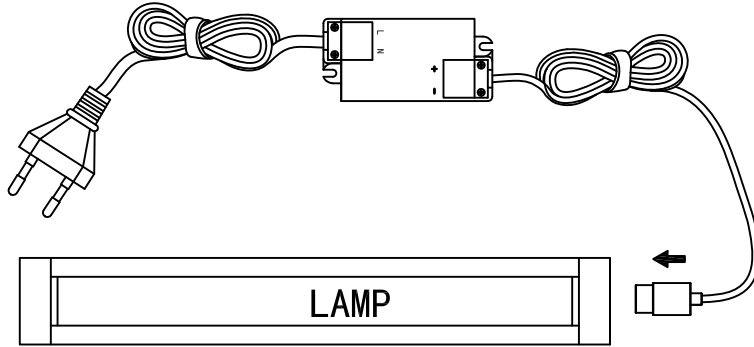


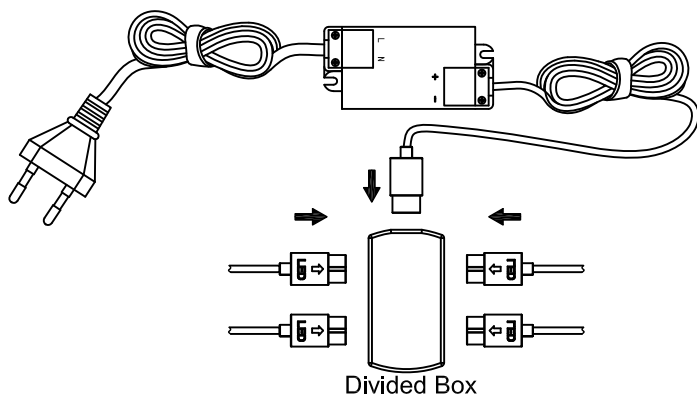
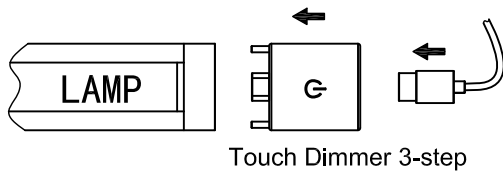
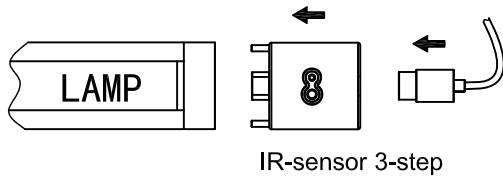
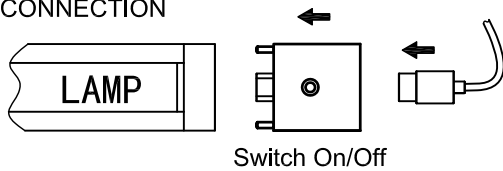
LED CABINET LAMP

www.markslojd.com

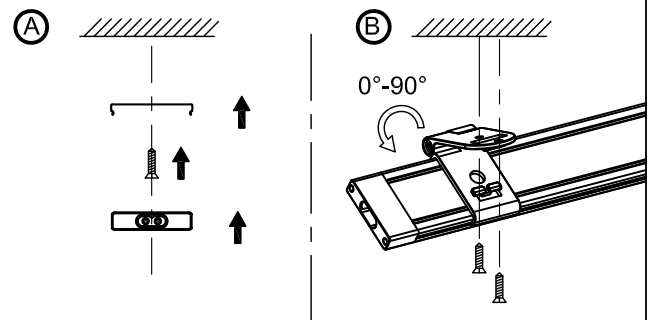
BASIC CONNECTION



SWITCH CONNECTION



BRACKET INSTALLATION



LED DRIVER SELECTION: The LED driver's power should be larger than the total power of lamps

LED TUBE	L=300mm/5W	L=500mm/7.5W	L=1000mm/14W
7W 24VDC 290mA	1 PCS	----	----
15W 24VDC 630mA	3 PCS	2 PCS	1 PCS
24W 24VDC 1000mA	4 PCS	3 PCS	1 PCS
36W 24VDC 1500mA	7 PCS	4 PCS	2 PCS
45W 24VDC 1875mA	9 PCS	6 PCS	3 PCS
60W/24VDC 625-2500mA	12 PCS	8 PCS	4 PCS

